

MX BUILDING HEATER

The Building Heater System harnesses waste heat from the MX-CHP to heat for your facility ensuring your critical components are protected from freezing during sub zero weather.

KEY FEATURES:

- ✓ Up to 8.5 kW (29,000 BTU/Hour) Heat When Paired With the MX Generator
- ✓ Simple Start-up control
- ✓ Built in Thermostat
- ✓ 7.25L (1.6 Gallon) Built in Tank
- ✓ Low Fluid Level Shut Down
- ✓ Finger-Safe Fan Guard
- ✓ Stainless Steel Frame and Drip Tray



SPECIFICATIONS

HEAT OUTPUT

Min. 5.1 kW (17,400 BTU/Hour)
Max. 8.5 kW (29,000 BTU/Hour)

TEMPERATURE CONTROL RANGE

Thermostat Controlled
10-27°C (50-81°F)

PUMP SPECIFICATION

Circulation rate 9 LPM (2.4 GPM)*
*Dependent on hose length and temperature of fluid

DISTANCE FROM BUILDING

Standard hose length is 3 m (10 ft)*
*Contact GPT if longer is required

ENVIRONMENTAL

Contact GPT for operating conditions below -40°C or above +40°C.

INDOOR OPERATING TEMPERATURE

Max. +40°C (104°F)
Min. -35°C (-31°F)

CONSTRUCTION & MAINTENANCE

CONSTRUCTION
Indoor use only
Weight: 150 lbs. (68 kg)

MAINTENANCE INTERVAL

Annual

ELECTRICAL REQUIREMENTS

INPUT VOLTAGE
120 V 1-PH 60 hZ

POWER REQUIRED

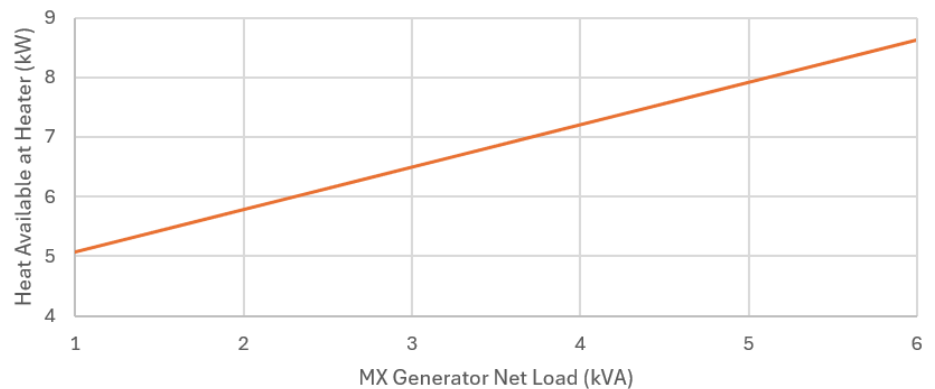
300 W*
*Max inrush during cold start up 680 W

CERTIFICATIONS

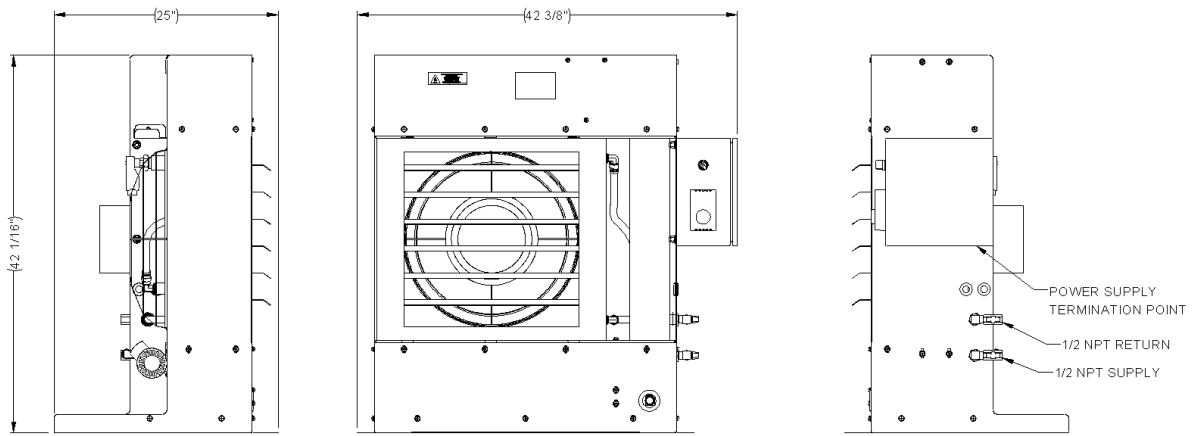


Conforms to UL 508A:2018 Industrial Control Panels
Certified to CSA C22.2 #286:2023 Industrial Control Panels and Assemblies

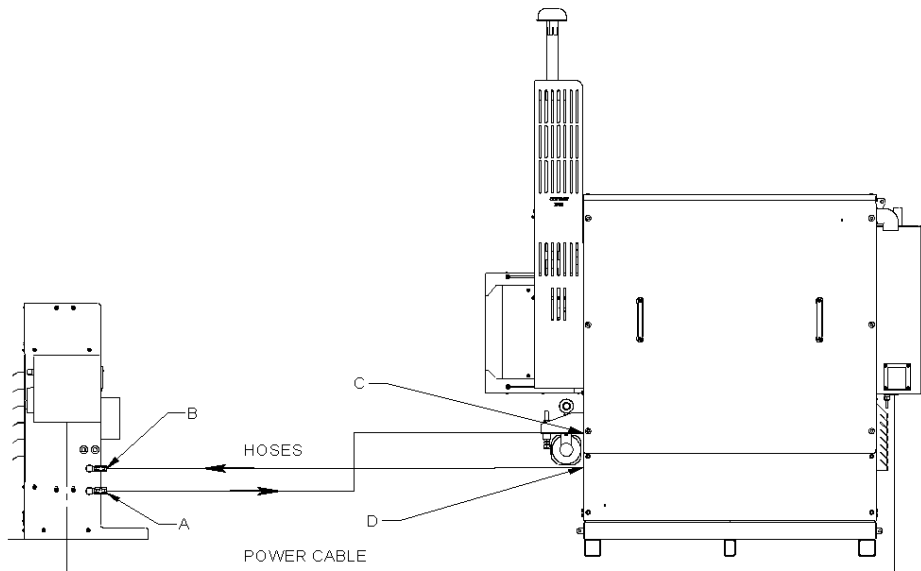
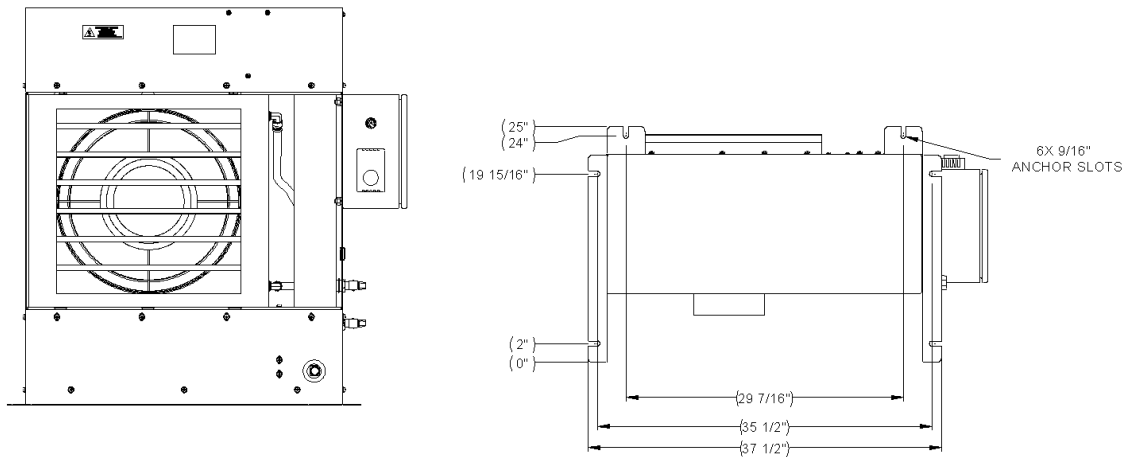
Heat Transfer Available with Building Heater



Specification data stated within this document is subject to change without notice. For more information, contact your GPT sales representative.



304909-1 REV0



304909-3 REV0

Specification data stated within this document is subject to change without notice. For more information, contact your GPT sales representative.