

# M<sup>⚡</sup> SERIES

PRIMEGEN



# POWER TO COMMUNICATE

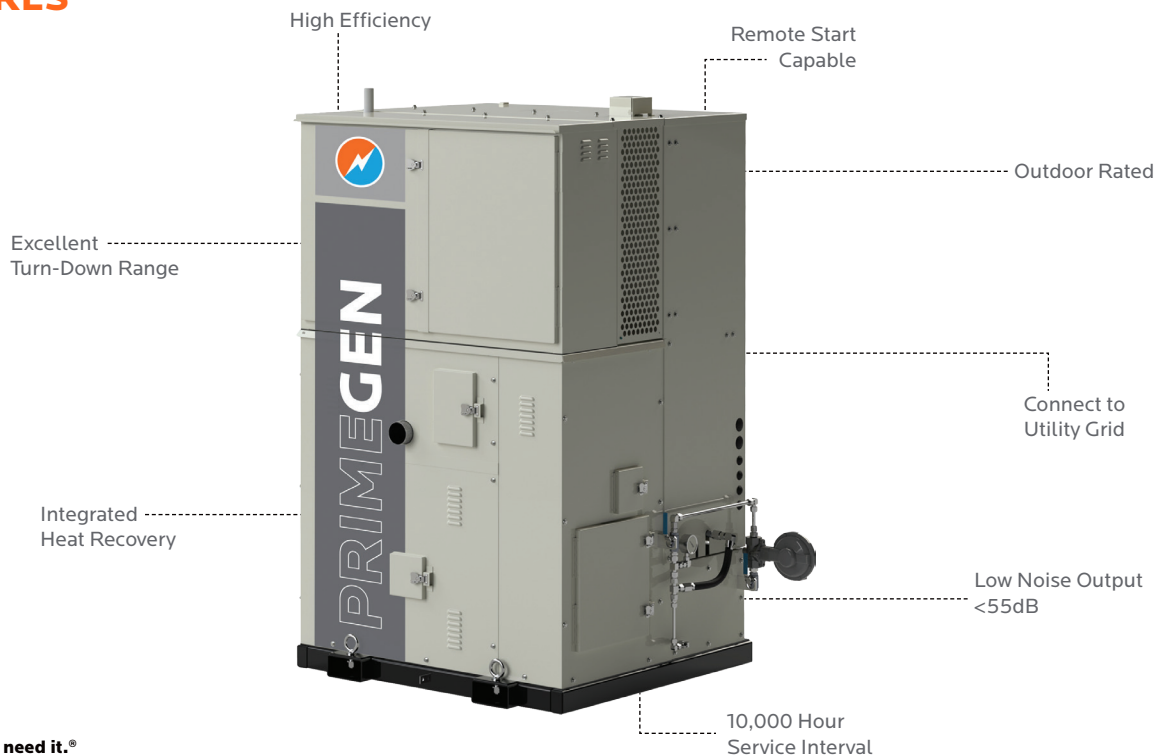


## M5

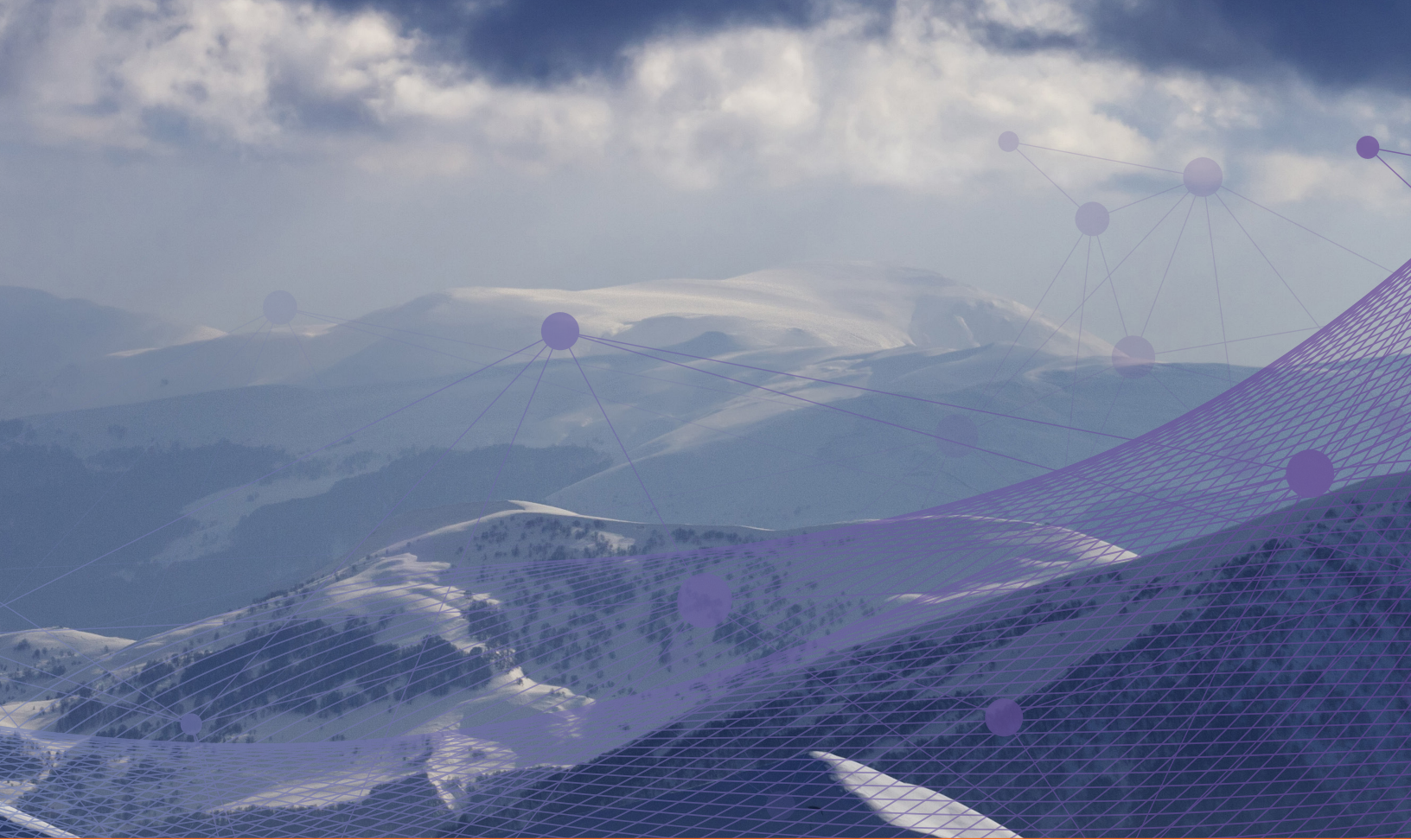
The **M5** Remote Power Generator provides up to 4.6kW of electrical power and up to 10kW of heat for glycol heat trace applications.

With a 10,000 hour service interval, the **M-Series** is a reliable, low-maintenance source of AC and DC electrical power for applications where regular utilities are unavailable or unreliable.

### FEATURES







# M1.5

Provides up to 1.2kW of AC and DC electrical power and up to 3.7kW of heat for glycol heat trace applications.

The compact footprint allows for the M1.5 to easily accommodate existing sites. Low noise and vibration, along with remote start and monitoring options make the M-Series the perfect solution for remote off-grid power.





# NO BOUNDARIES

A tall, lattice-structured communication tower stands on a mountain peak, partially obscured by a thick layer of white fog. The sky is a clear, light blue, and the foreground shows dark, silhouetted trees and branches.

**Power where you need it.®**

**Anywhere. Anytime. Any place.**

Reliable remote power generation can be difficult to achieve in environments where inclement weather and daily available sunlight affect power production.

The **M-Series** line of generators is built to operate within the harshest environments on Earth. Backed by Global Power Technologies' 40+ years' experience in the design and manufacture of remote, off-grid power generation products, the **M-Series** offers power from 1.2kW to 4.6kW and can be combined with solar for the ultimate hybrid power solution.

# REMOTE RUGGED RELIABLE



8,000–10,000 Hour  
Service Interval



Safe & Secure  
Design



Full Hybrid Options  
Available



Low Noise (<55db)  
Low Vibration



Flexible Fuel  
Options



High Efficiency  
Generator



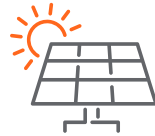
# THE OPTIONS



Battery Systems



Panels



Solar Hybrid



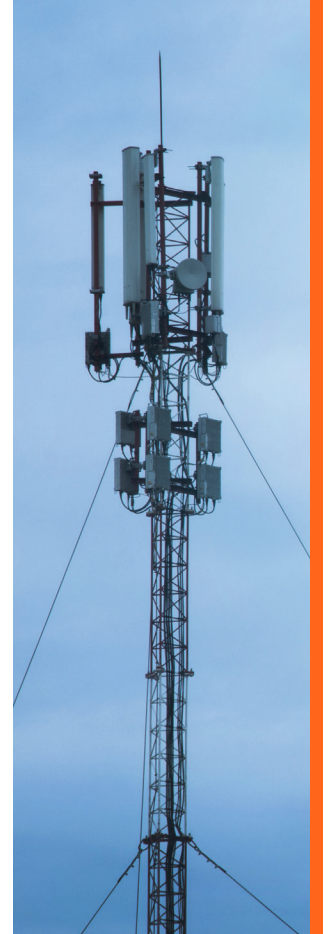
Cold Start



Heated/Cooled Cabinet



Fuel Conditioning & Monitoring



# THE DATA

## M5 Generator



### Specifications

POWER (kW)	<b>Up to 4.6 net; 5.0 gross</b>
WEIGHT	2300 lbs. (1043 kg.)
SIZE	57"W x 52"D x 75"H
FUEL CONSUMPTION	21~43 m <sup>3</sup> /day 32~62 L/day
CERTIFICATIONS	CSA SPE-1000
NOISE OUTPUT (dB)	54 dB (A)

120/240 VAC

750~1510 ft<sup>3</sup>/day  
8.5~17 gal/day

12/24/48 VDC (optional)

**Natural Gas**  
**Propane**

## M1.5 Generator



### Specifications

POWER (kW)	<b>Up to 1.2 net; 1.5 gross</b>
WEIGHT	1000 lbs. (454 kg.)
SIZE	53"W x 44"D x 72"H
FUEL CONSUMPTION	6.6~13.5 m <sup>3</sup> /day 11~22 L/day
CERTIFICATIONS	CSA SPE-1000
NOISE OUTPUT (dB)	54 dB (A)

120 VAC (240 optional)

232~475 ft<sup>3</sup>/day  
2.8~5.7 gal/day

12/24/48 VDC (optional)

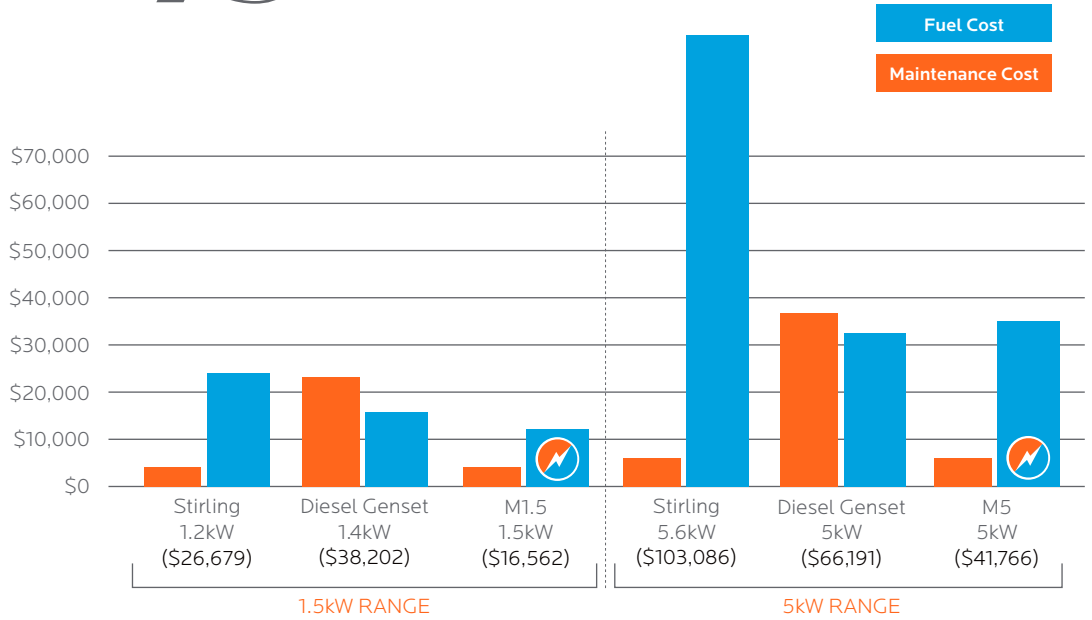
**Natural Gas**  
**Propane**

# THE NUMBERS

**50** Reduce OPEX by over **50%**

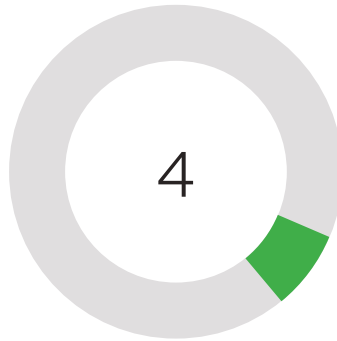
**75+** Save over **75%** on fuel costs

**TOWER POWER**  
Telecom tower savings over three year period



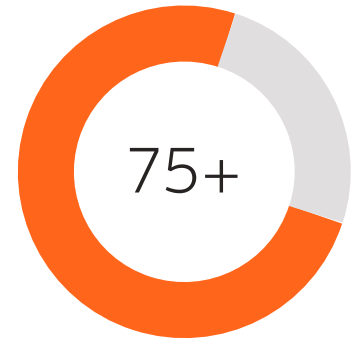
**99.95% Availability**

The M-Series offers reliable, uninterrupted and efficient power for any application where power is unavailable or unreliable.



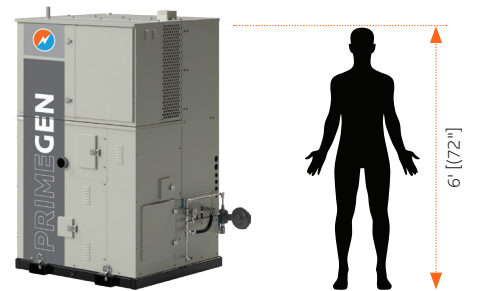
**4 Hour Service Time**

Save time and money. Easily maintainable in approx four hours, just once every 8,000-10,000 hours



**75% More Efficient**

Consumes up to 50% less fuel than competitive technologies and over 75% less fuel when combined with solar.





**Power where you need it.®**

[www.globalte.com](http://www.globalte.com)